



San Francisco
Health Network

SAN FRANCISCO DEPARTMENT OF PUBLIC HEALTH

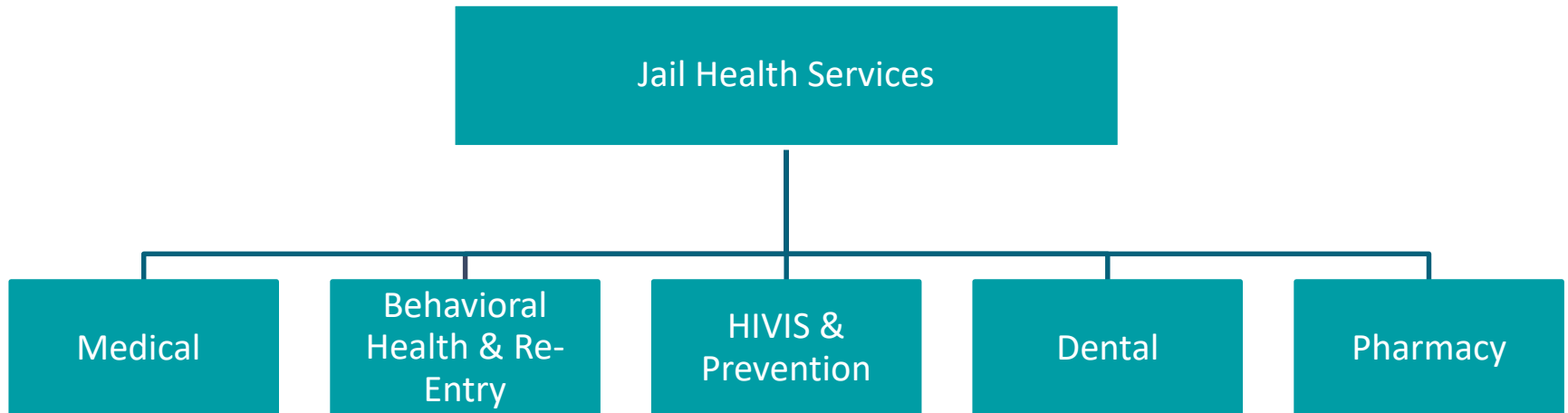
Jail Health Services

Lisa A. Pratt, MD, MPH
Director / Medical Director
Jail Health Services

June 2, 2020



JHS Organizational Structure



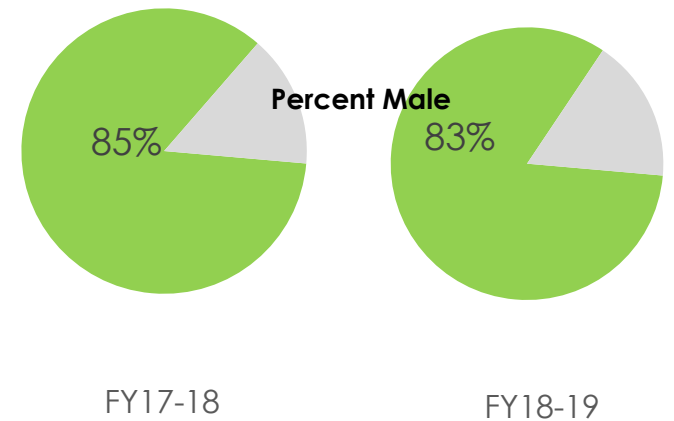
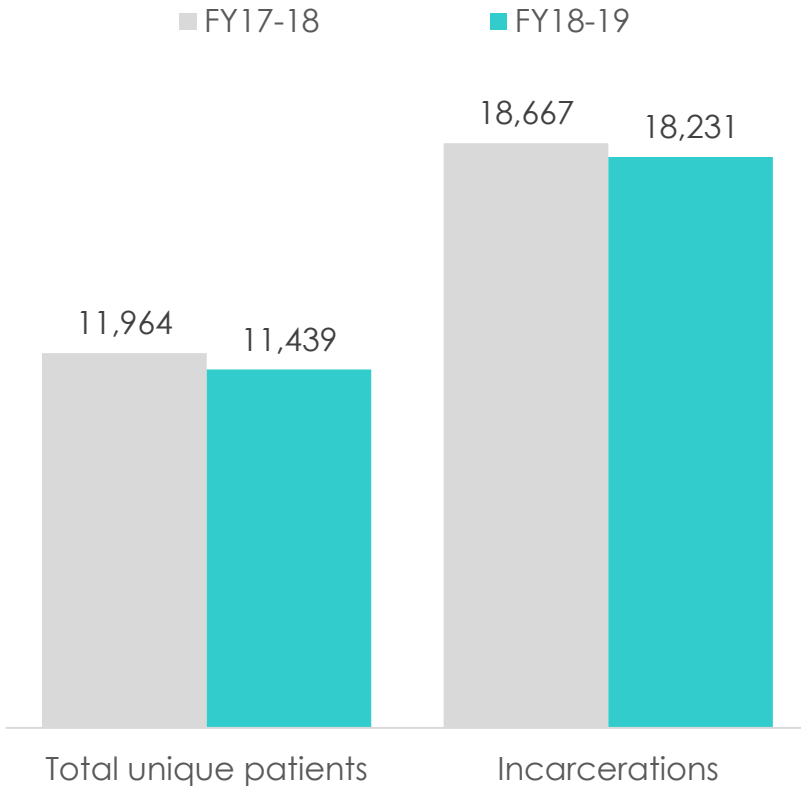


FY 19-20 Operating Budget

Salaries & Fringe – 156 FTEs	30,040,582
Professional & Specialized Services	2,313,520
▪ Includes X-RAY, Podiatry, UCSF OBGYN and Psychiatry	
Pharmaceuticals	3,586,308
Medical, Lab & Office Supplies	567,493
Transfers to/Services of Other Depts	455,489
	\$ 36,963,392

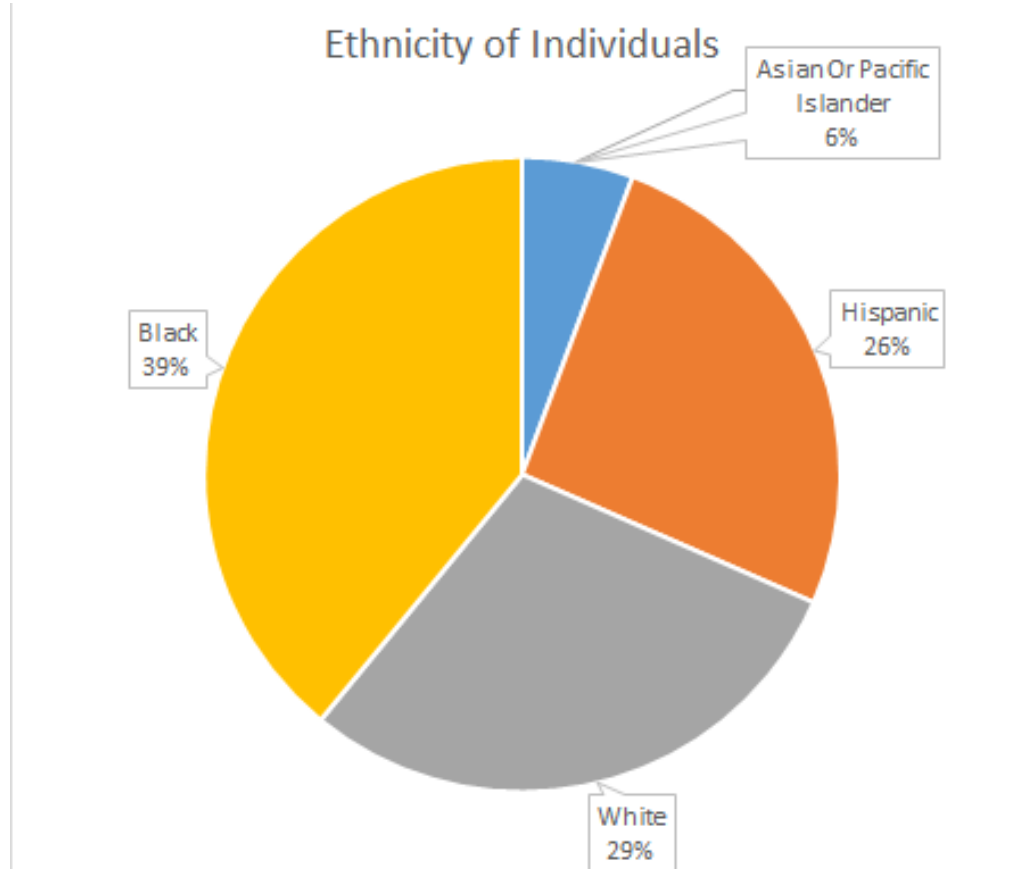


JAIL POPULATION FY 17-19





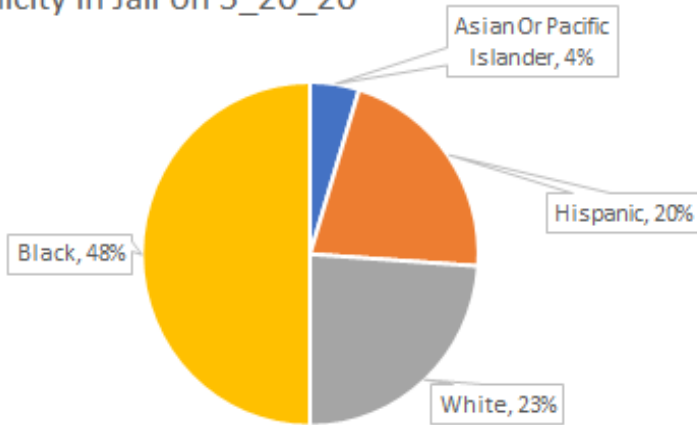
Race/Ethnicity Booking Data FY19-20





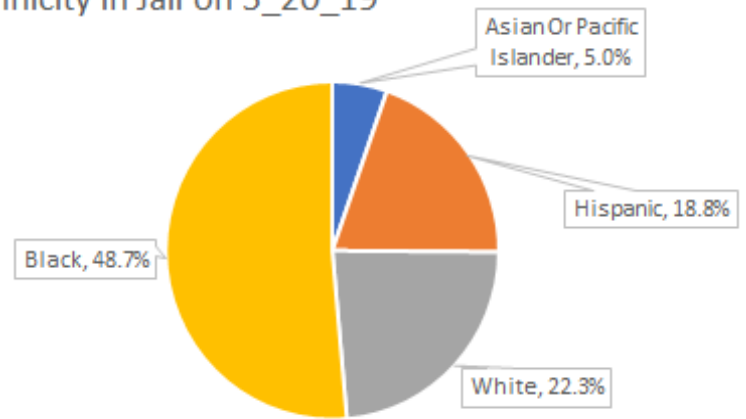
Race/Ethnicity Point in Time

Ethnicity in Jail on 5_20_20



■ Asian Or Pacific Islander ■ Hispanic ■ White ■ Black

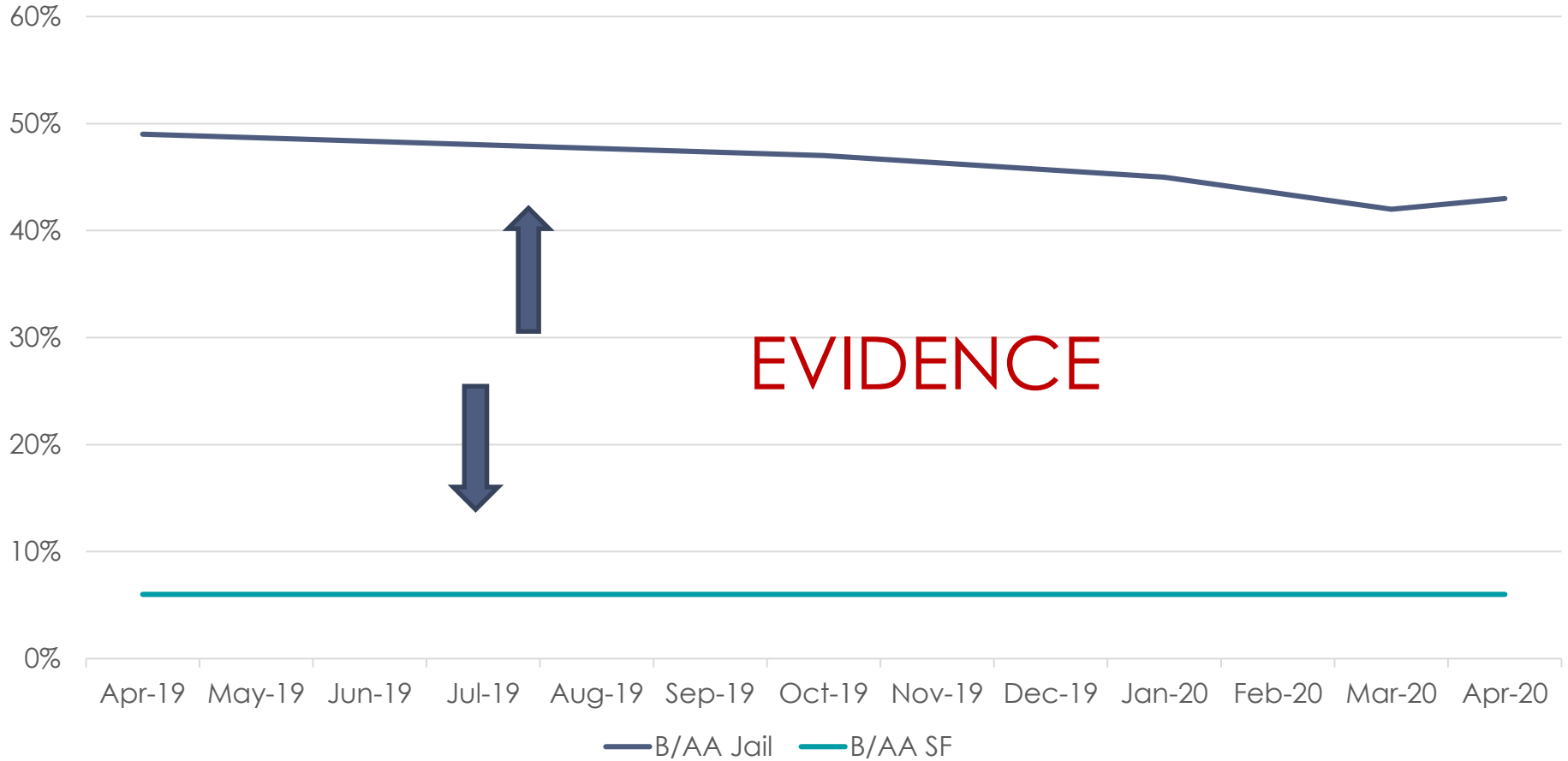
Ethnicity in Jail on 5_20_19



■ Asian Or Pacific Islander ■ Hispanic ■ White ■ Black



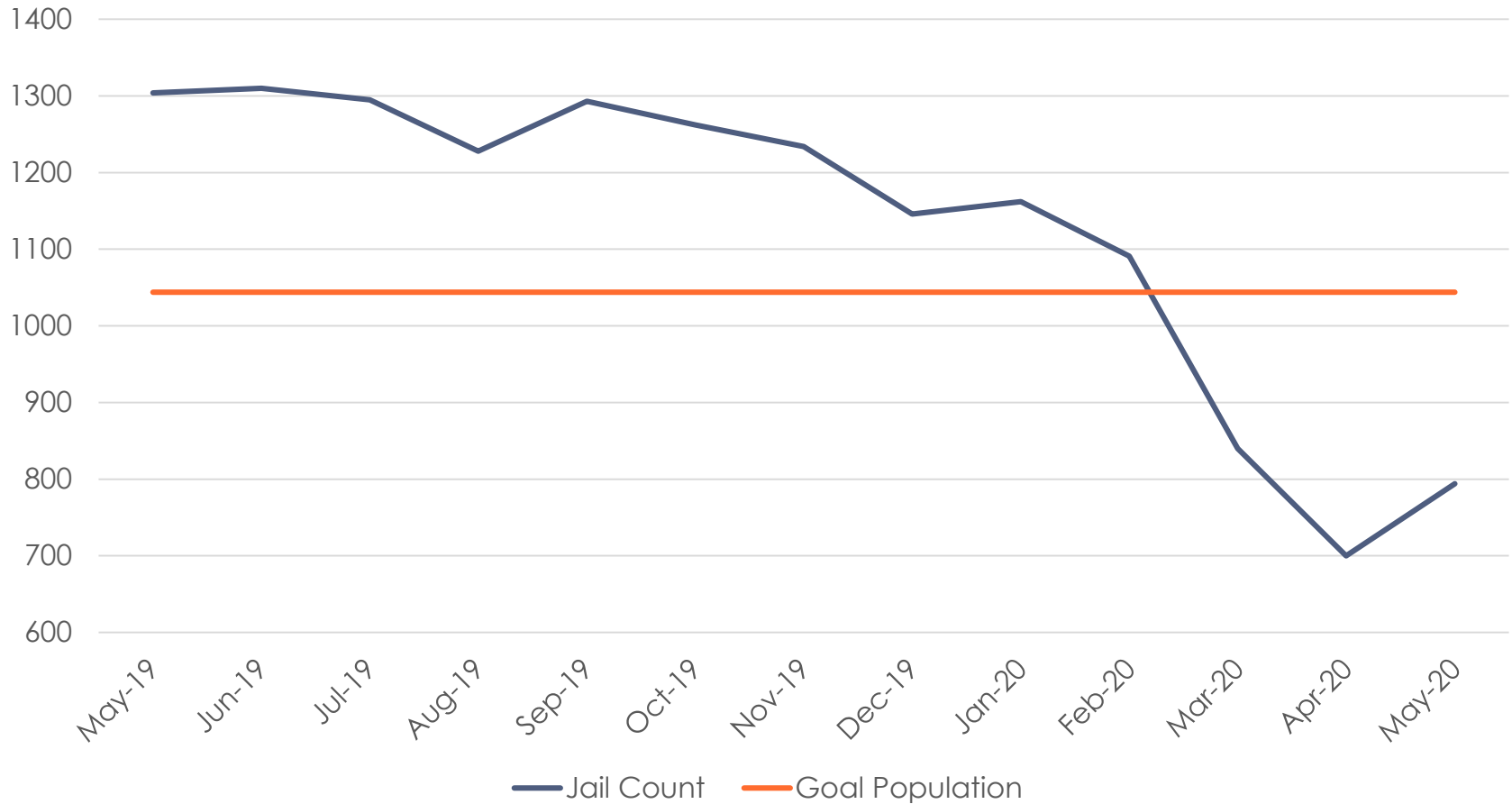
Percentage of B/AA: Jail vs Community



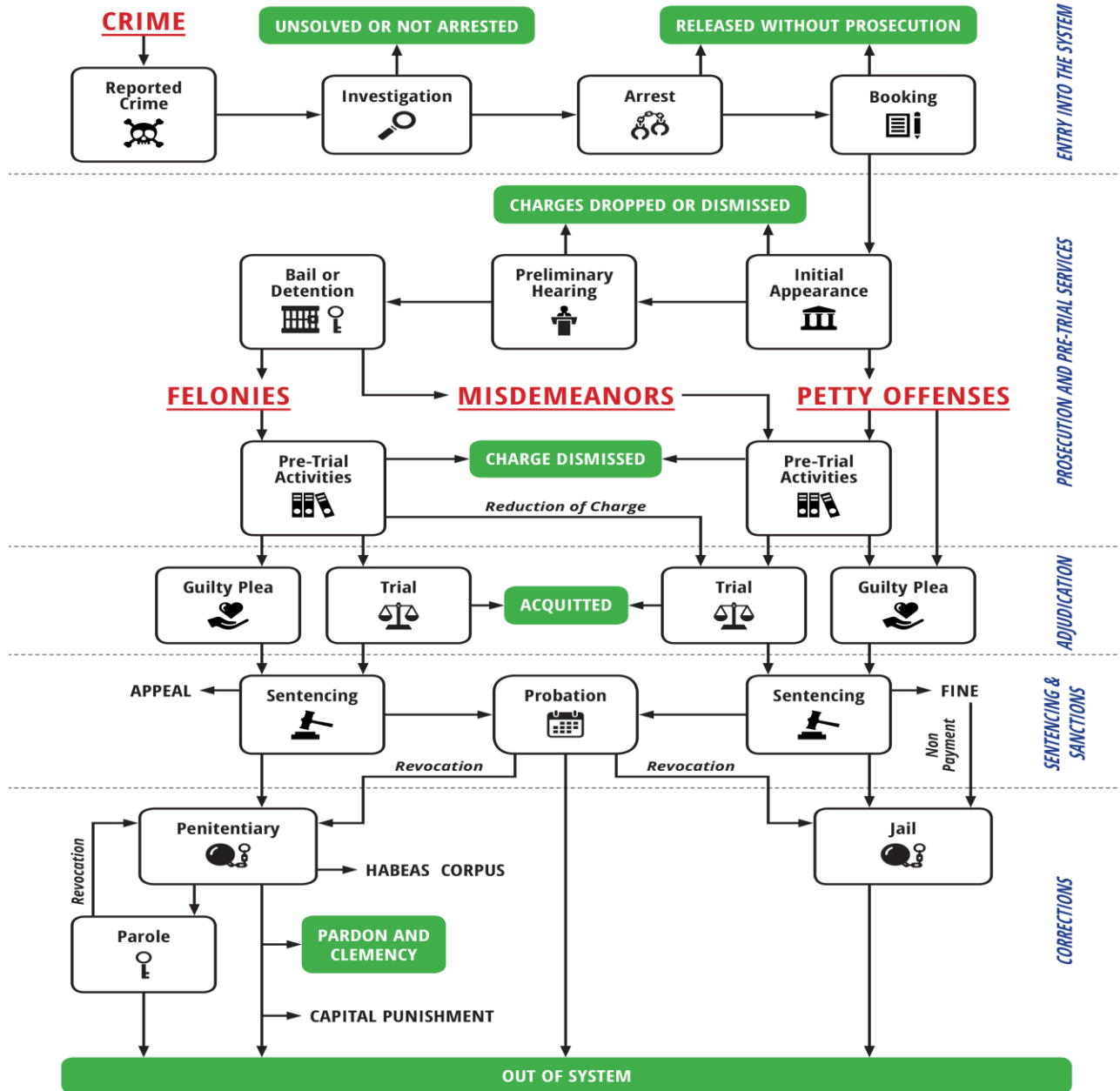


Jail Population Trend 6/19-5/20

SAN FRANCISCO DEPARTMENT OF PUBLIC HEALTH



The Sequence of Events in the Criminal Justice System



Adapted from the American Bar Association's "How Courts Work."

This infographic outlines a general process that may vary per state.



Bail Reform

- 10/2019 - SB 10 signed into law by Governor Jerry Brown and went into effect but currently has a stay
 - Eliminates cash bail system for non-violent, non-serious and non-sex offenses as defined by 1270.1(a) PC
 - Uses Public Safety Assessment (PSA) tool to determine appropriateness for release on own recognizances or under various levels of supervision
 - PSA determines likelihood that defendant will show up for court.
- 2/20/20 - Court reviews PSA results done within 8 hours and has 18 hours to make final decision, can be extended for another 12 hours with law enforcement request (Buffin v SF)
- 4/6/20 - Zero dollar bail temporarily instituted for misdemeanors and non-violent felonies by state Judicial Council



Behavioral Health Population

Jail Count: 750 (5/20/20)

- Under BHS Care: 293 (39%)
- On Psychiatric Medications: 204 (27%)

- MHSF Priority: 72 (9.6%)
- Evaluated by HSH Coordinated Entry: 119 (6%)
- HSH High Priority Status 9 (7.6%)



COVID Readiness

- **Decrease Population Density**
 - Work with criminal justice partners to reduce jail population
 - Move incarcerated people to all available locations with single cell where possible
- **Identify and Mitigate Risk**
 - Offer testing to all people at booking
 - Use rapid testing to allow quick isolation
 - Designate isolation and quarantine housing
 - Cohort medically vulnerable

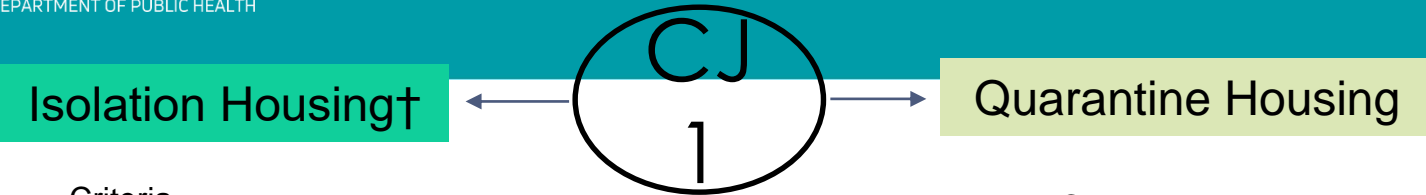


JHS/SFSO Partnership

- Staff and patient education
 - Hand washing, masking, distancing, symptoms
- Jail closed to all non-essential personnel
- Symptom screening and temp checks for all
- Masking requirement for all staff (JHS, SFSO) and incarcerated people
- Increased cadence of cleaning/sanitizing facilities



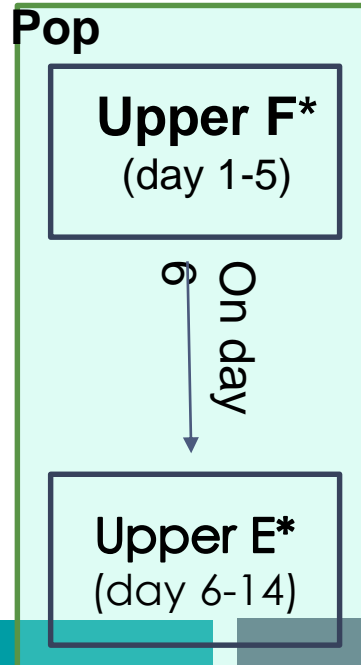
Intake Housing Flow Men



Criteria

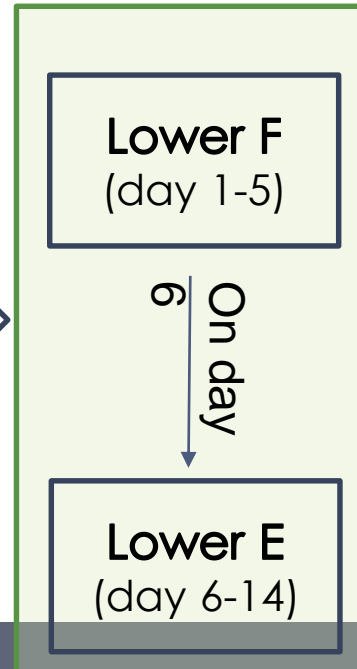
- Known COVID Positive
- Symptoms
- Exposure to COVID
- Hosp/ED Return

Ad Seg or Gen Pop

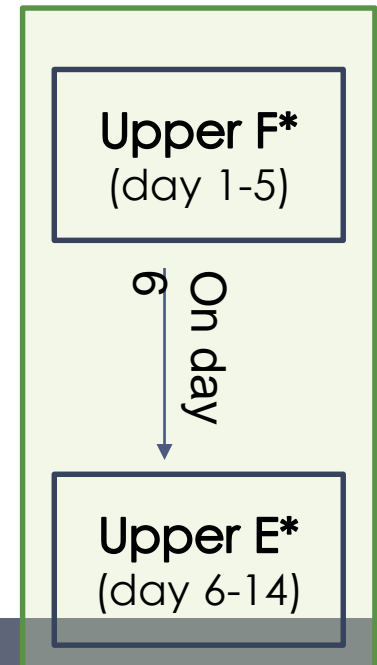


**If NP/MD removes from isolation before day 14, must still complete quarantine

Gen Pop



Ad Seg



Criteria

- New Intake
- No symptoms
- No exposure



Isolation Categories

Category	Definition	Housing	Movement	Discontinuation of Isolation
Suspect or Positive Case Isolation	Symptoms and awaiting test/result or positive	Single, Solid door with port	No Court, No Visiting. Shower alone, disinfect after Phone at cellside ok, disinfect after Walk alone Staff wears N95, face shield and gloves if in contact with patient out of the cell. If close contact, also gown	If negative COVID test ->Other Respiratory Isolation If positive COVID test 1. Liberalize movement with mask at day 10 (same as other resp iso) 2. Release from iso after 14 days with 2 negative tests, 24 hours apart
Other Respiratory Isolation	Neg COVID, continue iso to prevent spread of other resp virus	Solid door with port or single celled	Court/Visiting/Phone with mask. Walk alone Staff wears Surgical Mask	Symptoms improving and 7 days from symptom onset AND 72 hours fever free; shorter case by case. Lowest risk isolation (first to be moved out of isolation if there is a space crunch)
Exposure Isolation	Asymptomatic, high-risk exposure to confirmed case or outbreak or Inpatient/PES/ED return	Solid door with port or single celled Ok to house in same cell as same (if same exposure eg	Court/Visiting/Phone with mask Walk alone or in group of same Staff wears Surgical Mask	14 days if a new intake (even if test neg) 3 days for hosp return Case by case if already incarcerated



Quarantine Categories

Category	Definition	Housing	Movement	Discontinuation of Quarantine
Intake Quarantine	<p>Asymptomatic, potential (not known) community exposure.</p> <p>Cohorted by intake date to protect already incarcerated patients</p>	<p>Cohorted</p> <p>Men: Fpod x 5 days Epod x 9 days</p> <p>Women: Bpod Upper x 5 days, then lower x 9 days</p> <p>Ok to house in same cell as same</p>	<p>Court/Visiting with mask</p> <p>Walk alone or in group of same</p>	<p>On order of clinician</p> <p>14 days (even if test neg) If moving to CJ5 PSLU or CJ4 housed with long termers, may need an additional 7 days of intake quarantine downtown (extended quarantine below)</p>
Extended Quarantine	<p>Gen Pop Patients who will move from CJ2 to CJ4/CJ5 need an additional week of quarantine</p>	<p>Either cohort or single celled</p> <p>Ok to house in same cell as same</p>	<p>Court/Visiting with mask</p> <p>Walk alone or in group of same</p>	<p>7 days (total 21 days of monitoring)</p>



County Jail 4 Closure

- CJ 2 – 345
 - CJ 4 – 20 kitchen workers (with final closure TBD)
 - CJ 5 – 676
- Total Capacity as of July 11, 2020 – 1041
- CJ2 Kitchen to be renovated prior to CJ4 closure



Current JHS Staff at CJ4

For current census of 140 patients:

- 5 FTE 2320 RNs
- 3 FTE 2312 LVNs
- 1 FTE 2328 NP
- 1 FTE 2930 BH Clinician
- 0.3 FTE 2210 Dentist
- 0.5 FTE 2202 Dental Assistant



Post-COVID Operations

- BHS
 - Augment Reentry Staffing for PEH
 - Enhance Group/Programming due to need for smaller groups

- Redeployment of RNs
 - Infection Control
 - Nursing Educator
 - Ongoing testing in CJ1